



# WARMIA AND MAZURY

Healthy life, pure profit



# INVESTMENT ASSETS OF

## SPECIAL ECONOMIC ZONES (POLISH INVESTMENT ZONE)

Within the Polish Investment Zone programme, the economic development of the Warmia and Mazury Region is supported by two Special Economic Zones.



Suwalska Specjalna  
Strefa Ekonomiczna S.A.

**These zones provide the highest level of public assistance in Poland i.e.** the exemption from income tax - up to 70% of eligible costs of a new investment or employment of a specific number of employees in connection with a new investment.



## TAX BENEFITS:

70%

for **small and micro**  
enterprises

60%

for **medium-sized**  
enterprises

50%

for **large**  
enterprises



### Prof. dr hab. inż. Mariusz Piskula

Director of the Scientific and Research Institute in Olsztyn

*There is a reason why Warmia and Mazury is a natural wonder. A clean environment and magnificent landscapes have long been a magnet for those seeking relaxation, and now they are also the basis for the region's smart specialisation. In recent years, it has also attracted ambitious and bold investors, who benefit from supporting scientific and research units with international contacts. The proximity of high-quality resources means a low carbon footprint for operations. All this, supported by innovation-oriented local authorities, guarantees success for still undecided entrepreneurs.*

# WARMIA AND MAZURY

## BUSINESS SUPPORT INSTITUTIONS

Three science and technology parks

Office space rental, investment land

Specialised laboratories

Assistance in obtaining funds

Support for new market entrants at every stage of development, right from start-up

Professional consultancy services

Technology development and transfer

Initiating and participating in the conduct of R&D work

Support for the creation of new jobs in investment areas

PARK  
NAUKOWO-  
TECHNOLOGICZNY  
W ELKU

136  
thousand

national economy entities  
in Warmia and Mazury

- 11 scientific and R&D units
- 5 higher education institutions
- 3 research centres supporting innovative specialisation sectors
- 3 companies with favourable CBR status
- 6 business incubators
- Scientific Institute of the Polish Academy of Sciences
- Warmia and Mazury Investors and Exporters Assistance Centre



## HUMAN RESOURCES

- » **1,41 million population**, of which 60.7% of the residents of Warmia and Mazury are of working age with 18.2% of pre-working age
- » **8,6% - unemployment rate** (in February 2022)
- » **Constant access to human resources** thanks to the University of Warmia and Mazury (79 faculties, 18 thousand students) and four other higher education institutions in the region

**65 companies**

Olsztyn Science  
and Technology Park

**78 companies**

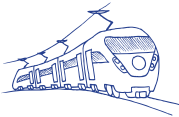
Elbląg  
Technology Park

**15 companies**

Science and Technology  
Park in Elk

# INFRASTRUCTURE IN THE REGION

## COMMUNICATION ACCESSIBILITY



**1200 km**  
of the rail network



**258 km**

of express roads running through Warmia and Mazury (S7, S16, S22, S51, S61)



**Seaport**



### **Kamil Lentacz**

Director of the largest logistics center in the region supporting e-commerce industries

*The region of Warmia and Mazury, through its connection with the rest of the country by a network of roads in the express specification, has become very attractive for business based on the rapid distribution of goods. The e-commerce industry, or logistics dedicated to FMCG, and the courier and distribution industry are just the beginning of the list. Available, consolidated investment areas, offering the possibility of large-scale development, the availability of which in other parts of the country may pose a significant challenge, is another element attracting the attention of potential investors. The significant economic development of the region in recent years has also equipped it with a broad spectrum of companies, businesses and service providers, providing a full range of facilities to conduct business and meet any needs locally. This offers greater flexibility in operations, saving time and resources.*

**107 km**

of roads under construction

**416 km**

of roads under tendering procedures or preparation of documentation

**Total length of roads in Warmia and Mazury**

**1333 km**

Source: GDDKiA Olsztyn

# Olsztyn-Mazury Airport



Szymany  
near Szczytno

Location



CARGO

service in 2021



58  
km

The airport is located  
only 58 km from Olsztyn



2  
aircraft  
hangars

to handle General Aviation  
aircraft, 600 m<sup>2</sup> each



73  
hectares

of investment  
areas in the peri-airport zone



169 734  
kg

this is the weight of baggage  
checked in at the airport in 2021



47  
thousand

passengers used  
the airport in 2021



539 782

travellers have used the  
airport since its opening  
(from 21.01.2016 to 26.01.2022)



## Wiktor Wójcik

President of Olsztyn-Mazury Airport

*Since the beginning of its operation, the Olsztyn-Mazury Airport has been fulfilling its fundamental objectives - reducing communication exclusion of north-eastern Poland and being the driving force of the regional economy. Thanks to the airport, Warmia and Mazury have become accessible - within an hour's flight, making them attractive both to tourists visiting our region and to entrepreneurs looking for convenient locations for their investments. Whether directly or indirectly, the airport is an added value for the local and regional economy - it increases economic activity in the region creates new jobs and new development opportunities for suppliers of goods and services from our region.*

# SMART SPECIALIZATION

## WOOD AND FURNITURE

Wood and Furniture is a smart specialisation based on some of the largest forestry resources in the country and traditions associated with this industry, including:



Manufacture  
of furniture



Processing  
and selling wood



Design  
services



Manufacture  
of other joinery products



Repair  
and maintenance



Sale of wood  
and furniture products



Science and Business  
Environment Institutions

Warmia and Mazury region produces **23%** of wood furniture made in Poland and **12%** of windows and doors, wooden frames and thresholds

More than **90%** of furniture is exported. Furniture and wood products from the region are exported to more than 60 countries worldwide, including Saudi Arabia, the United Arab Emirates, Dubai, the USA, Russia, Japan and China

The value of production is approximately **4 billion PLN** annually

**35%** of the area of the Warmia and Mazury Province is covered with forests

Forest area administered by the Regional Directorate of State Forests in Olsztyn **787 063 ha**



### Jan Szynaka

President of the Polish Chamber of Commerce of Furniture Manufacturers  
CEO of a furniture group

Warmia and Mazury is not only a region famous for its natural beauty, but above all, it is the heart of the Polish furniture industry. It is here that the largest furniture manufacturers originate, building the potential of the domestic economy and the Polish furniture sector in the world. Today, furniture from the Warmia and Mazury region not only contributes to the development of the national economy but is also a showcase promoting high-quality Polish products. Furniture from our region finds its way into showrooms all over the world, winning the appreciation of customers in Germany, Great Britain, the United States, Saudi Arabia, Japan and many other countries. The Furniture Group I manage, which is now the economic pillar of the Warmia and Mazury region, is a perfect example of the global development of a family business. From a small, home-based carpentry workshop, it has become an international corporation, employing over 3,000 people in its plants.

# IONS OF THE REGION

## WOOD AND FURNITURE



### Waldemar Zawiślak

Member of the Board, Sales Director of a factory producing furniture boards, worktops and floors

*From the perspective of our company, Warmia and Mazury is a location where we have access to resources, a developed road network and numerous recipients of our products (furniture factories). In the region, we can also find experienced, energetic and well-educated professionals. The wood and furniture industry is one of the smart specialisations in the region. These factors led the Management Board of our company to decide to build a factory in Biskupiec. It is not without significance that the region is constantly developing, improving its road and railway infrastructure and attracting more investors every year.*

# SMART SPECIALIZATI

## WATER ECONOMY

**Water Economy** involves intelligent handling of the country's largest surface water resources, on which a range of economic activities can develop in the region. It includes:



**27,5 km**  
long - the longest lake  
in Warmia and Mazury -  
Jeziorak

A huge share in  
Polish exports, even  
to the most remote  
corners of the world  
(South America,  
Japan, Africa, and  
Siberia).

Yachts for inland  
waters and the  
sea: for regattas,  
tourist sailing and  
even trips around  
the world

Annual production  
of the four largest  
boat and yacht  
manufacturers in the  
Region:  
**6 050 units**

**Two shipyards**  
have their own  
Research and  
Development Centres

**2600**  
Number of lakes in the  
„Land of a Thousand  
Lakes“

The total area of the  
four largest shipyards  
is  
**73 000 m<sup>2</sup>**

The largest shipyard in  
the Region has over 60  
years of experience in  
manufacturing yachts  
and motorboats. It is one  
of the oldest shipyards  
in Poland and one of the  
most modern production  
facilities in Europe.

**1013 million m<sup>3</sup>**  
- Mamry Lake is the reservoir  
with the largest amount of water  
in Poland. If one wanted to cover its  
depths with sandbags, the sandbags,  
stacked one on top of the other,  
would cover a distance 25 times  
longer than the distance from the  
Earth to the Moon.

The largest lake in  
Poland is Śniardwy,  
covering  
**113,8 km<sup>2</sup>**

**6%**  
of the area of Warmia  
and Mazury is covered  
by lakes

The total number of  
employees:  
**1900 approx**



# FUNCTIONS OF THE REGION

## WATER ECONOMY

### THE CONCENTRATION OF YACHT SHIPYARDS IN POLAND



#### LEGEND:

1. Iława - 3 shipyards
2. Ostróda - 4 shipyards
3. Galiny - 1 shipyard
4. Węgorzewo - 1 shipyard
5. Giżycko - 3 shipyards
6. Gołdap - 1 shipyard
7. Olecko - 1 shipyard
8. Mrągowo - 1 shipyard
9. Małyty - 1 shipyard
10. Elk - 1 shipyard

### SEAPORT IN ELBLĄG

Region's link to the world

Total area – **470 ha**

Length of port quays – **3,7 km**

Depth of the fairway – **2,5 m**

- » Railway siding
- » Shipyard
- » Transshipment and passenger terminal
- » **150 tonne** capacity overhead crane
- » A grain elevator with a capacity of **14,000 m<sup>3</sup>**
- » Ship turntable for **120 m** long ships
- » **5** harbour basins
- » **5** marinas



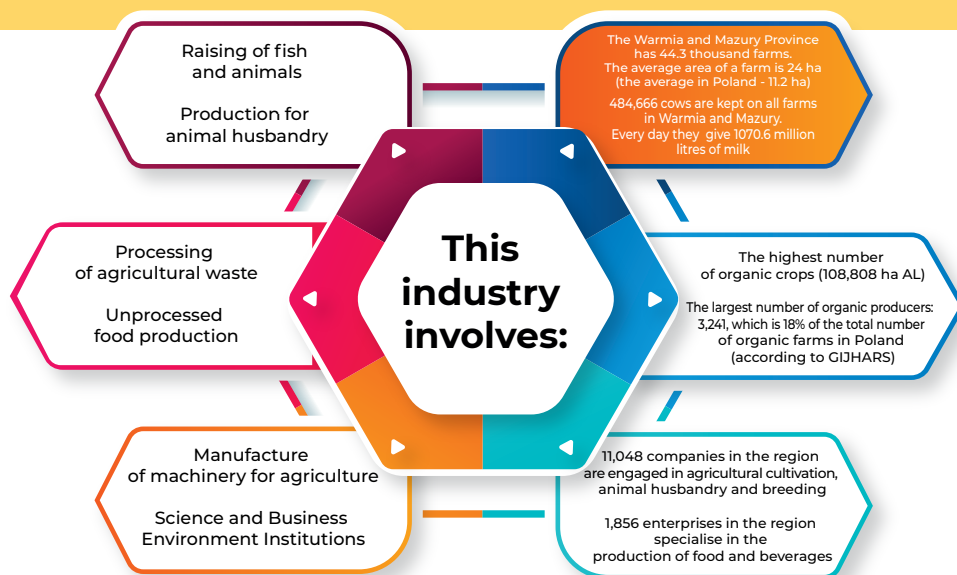
#### EDUCATION

##### PROFESSION:

- Boatbuilder
- Inland navigation technician
- Tourist services technician
- Hotel technician
- Inland fishing technician
- Environmental engineering and land reclamation technician

# SMART SPECIALIZATION

## HIGH QUALITY FOOD



## PRODUCTION OF KEY AGRICULTURAL PRODUCTS



CEREALS



MEAT



COW'S MILK



EGGS

The Faculty of Food Sciences of the University of Warmia and Mazury in Olsztyn was ranked 5th in 2021 in the ranking of higher education institutions in Poland in the category „Majors in nutrition and food”



### Piotr Kulikowski

Entrepreneur

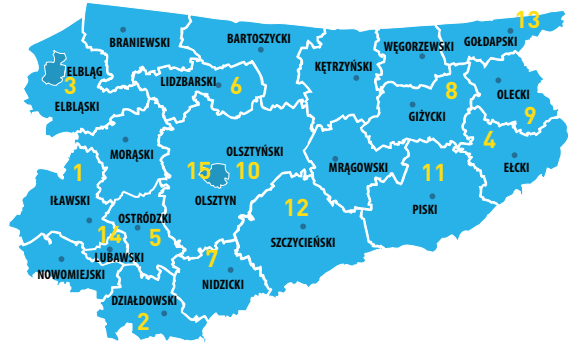
*From my perspective, the region of Warmia and Mazury is not only an attractive place for tourism and sightseeing, although these qualities are certainly an impulse and driving force behind many activities undertaken here. As a food producer, I know how important the source of the raw materials used is. That is why at our Olsztyn plant, over 90% of our raw materials come from farms located in the region. It is here that we have created a brand that confirms the principle that the high quality of the final product is not possible without the best raw materials. Our business is supported by local authorities, which are favourable to entrepreneurs.*

# ONS OF THE REGION

## HIGH QUALITY FOOD

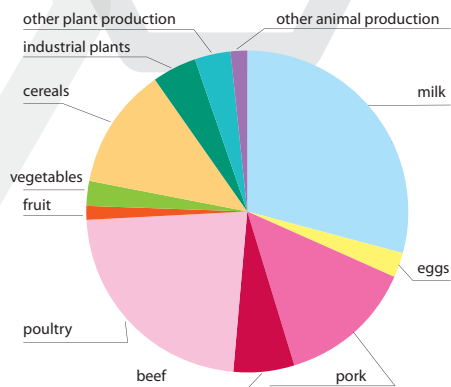
### TASTY FESTIVALS:

1. Goose Festival (Iława), Turkey Festival (Nowa Wieś near Iława)
2. Corn Festival (Ciborz), Cabbage Festival in Nowe Dłutowo Raspberry Festival (Słup), Fish Festival (Wąpiersk)
3. Elbląg Bread Festival
4. Regional Honey Festival (Elk)
5. Masurian Potato Day in Kraplewo (Ostróda Municipality)
6. Festival of Traditional and Farmer's Cheese (Lidzbark Warmiński)
7. Baked Potato Festival (Janowiec Kościelny)
8. Masurian Fish Festival „Fish for health” (Mikołajki)
9. Olecko Milk and Honey Festival
10. National Cheese Festival (Olsztyn), Regional Herb Festival (Olsztyn), Peasant Fair (Olsztynek), Warmia Dumpling Feast (Biesowo), Harvest Festival as part of the Provincial Harvest Festival, Bio Hub Bazaar (Olsztynek)
11. Forest Festival (Pisz), Fisherman`s Fiest (Orzysz)
12. Masurian Potato Festival (Szczytno), The Masurian Potato Festival (Szczytno), Mushroom Festival „Mushrooming” (Wielbark)



13. Regional Festival of Borderland Kartaczewo (Goldap)
14. Regional Apple Festival (Lubawa)
15. Warmia Mazury and Powiśle Culinary Heritage Festival, Warmia Christmas Market (Olsztyn), Autumn Agricultural Fair „Everything for Agriculture” (Olsztyn)

### Structure of agricultural commodity production in the Warmia and Mazury Province in 2020



### Dr inż. Tomasz Jeliński

Scientist, entrepreneur

*High quality food - where else but in Warmia and Mazury? Here, nature is still at our fingertips, as are the best scientific and research units. This is why we support even the most ambitious investments in science and technology parks as well as in traditional processors. Using international experience, modern laboratories and regional funds, we stimulate the development of local companies and build an intelligent economy for the region.*

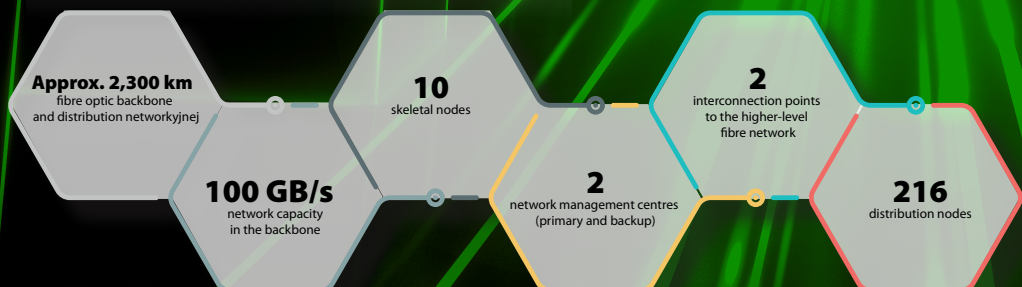
# IT SECTOR IN WA

## INDUSTRY 4.0 TECHNOLOGIES IN WARMIA AND MAZURY:

- Collaborative and autonomous robots
- Integration of IT systems
- Simulation systems (digital twin)
- Cloud computing
- Analytical systems (big data) with machine learning
- Cyber security
- Industrial Internet of Things (IIoT)
- Artificial Intelligence (AI)
- Blockchain
- Edge Computing
- Virtual reality and augmented reality
- Incremental Manufacturing



## WARMIA AND MAZURY REGIONAL BROADBAND NETWORK:



# ARMIA AND MAZURY

## EDUCATION:

More than 1,600 students in the region are studying IT at the three universities in Warmia and Mazury in the following fields of study:

- General IT
- Information systems engineering
- Multimedia techniques
- Design of information systems and computer networks
- Computer systems and networks administration
- Data science in practice
- Bioinformatics
- Databases and data warehouses
- Programming of numerically controlled systems
- Information engineering
- Geodesy and information technology

## SECONDARY AND POST-SECONDARY SCHOOLS TRAIN IN THE PROFESSIONS

PROGRAMMING  
TECHNICIAN

IT TECHNICIAN

ICT AND  
TELECOMMUNICATIONS  
TECHNICIAN

MECHATRONICS  
TECHNICIAN

AUTOMATION  
TECHNICIAN



### Mariusz Babula

President of an innovative 3D printing company

*Olsztyn is the place where our company took its first steps and where our head office is still located. It is here that we have managed to build our business on an international scale. Currently, we are among the leading manufacturers of high-quality 3D printers. Thanks to this, we manage to fulfil our primary mission of spreading highly advanced technology in the surrounding reality, and thus actually improve people's working and living comfort. The company is consistently developing and expanding its team with qualified specialists. Last year we also opened an office in Warsaw.*

# WORK LIFE

HIGH QUALITY OF LIFE

## Warmia and Mazury



One of the most beautiful regions in the world

An ideal place to balance work and private life

Rich cultural and sporting offer

Attractive location and excellent conditions for leisure and sport

Freedom of creation

Contact with nature

Unusual tourist conditions



# BALANCE

## Medical tourism

The potential of the local medical facilities, hotels and SPAs with medical and related services is conducive to the development of medical tourism. Work is underway to implement a new smart regional specialisation based on broadly defined health tourism called „Healthy Life“.

Domestic and foreign tourists, who come in large numbers, will have even better access to medical services, for example, aesthetic medicine and dental services, as well as spa treatments, diet and nutrition holidays, cardiology and sleep diagnostics. As indicated by the Institute for Medical Tourism Research and Development, Polish dentistry is currently the most popular among foreign tourists.

## SPAS

Goldap has the cleanest air in Poland. Patients can use Mazurian brine graduation towers, which create a therapeutic microclimate, all-year-round modern Pump Room with mineral and healing waters, brine spas, peloid baths and salt cave.

Four towns have the status of spa protection areas: Frombork, Lidzbark Warmiński, Miłomłyn and Górowo Iławeckie.





# INVEST IN WARMIA AND MAZURY

## Economic service [invest.warmia.mazury.pl](http://invest.warmia.mazury.pl)

- » Economic **news from the region**
- » **Comprehensive** information for investors and **exporters**
- » **Investment areas** database
- » Support **for entrepreneurs**
- » Information on **grants**
- » Investment assets of **Warmia and Mazury**



**WARMIA AND MAZURY** is a friendly business environment, providing support of the Investors and Exporters Assistance Centre, logistic facilities and facilitation for investors.



### Centre for Investors and Exporters Assistance (COIE) of the Warmia and Mazury Province

Tel. 89 512 51 95, 89 512 51 83, 89 512 51 82  
e-mail: [coie@warmia.mazury.pl](mailto:coie@warmia.mazury.pl)  
[www.invest.warmia.mazury.pl](http://www.invest.warmia.mazury.pl)



### Marshal's Office of the Warmia and Mazury Province

Głowackiego Street 17, 10-447 Olsztyn  
Tel. 89 512 51 70  
[www.warmia.mazury.pl](http://www.warmia.mazury.pl)